

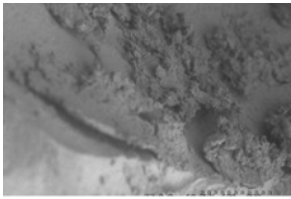
Images of RS14 (antler-scraping) residues

using Hitachi S3500N VP-SEM

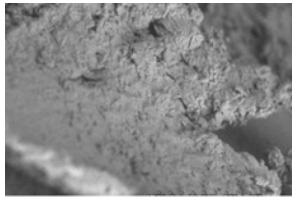
The key to the images is in the first two pages of this document.

The images published in this pdf are those that were used in the training portion of the experiment reported in Monnier et al. 2012, *J. Arch. Sci.* For questions, please contact Gilliane Monnier at monni003@umn.edu.

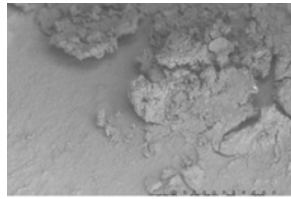
Naming conventions: 'RS' = Residue Study; 'D' = Dorsal side; 'V' = Ventral side; 'a', 'b', etc. = residue label; '25', '50', '115' = magnification used



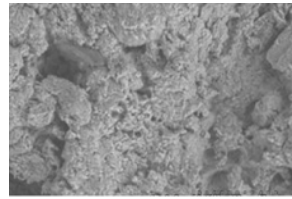
RS14D_a01.TIF



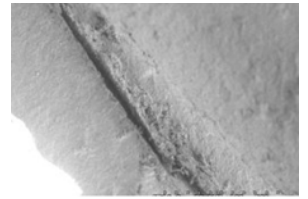
RS14D_a02.TIF



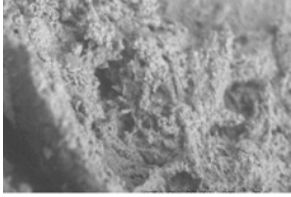
RS14D_b01.TIF



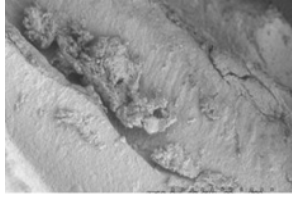
RS14D_b02.TIF



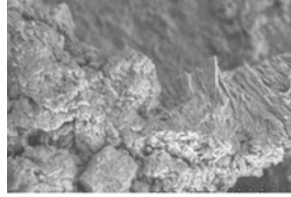
RS14D_d01.TIF



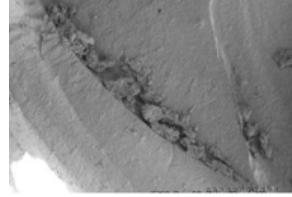
RS14D_d02.TIF



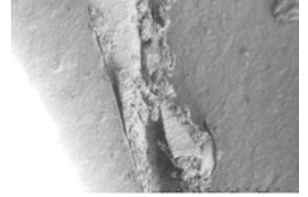
RS14D_e01.TIF



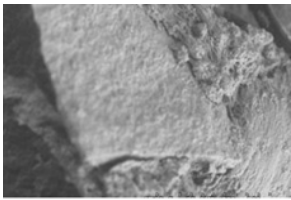
RS14D_e02.TIF



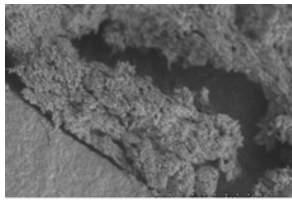
RS14D_f01.TIF



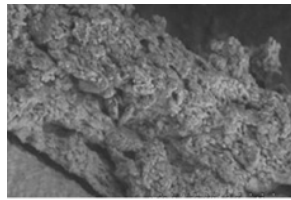
RS14D_f02.TIF



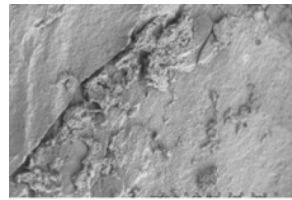
RS14D_f03.TIF



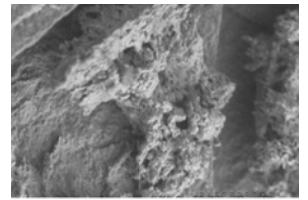
RS14D_f04.TIF



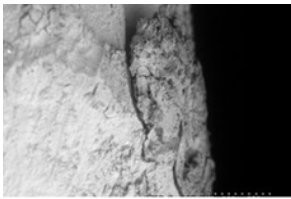
RS14D_f05.TIF



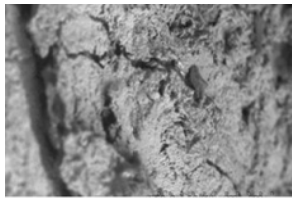
RS14D_g01.TIF



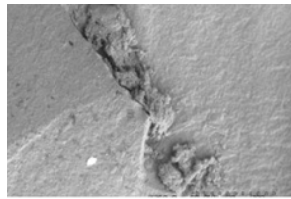
RS14D_g02.TIF



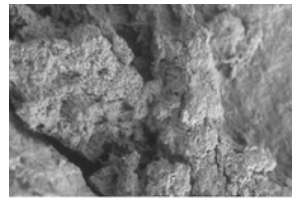
RS14D_h01.TIF



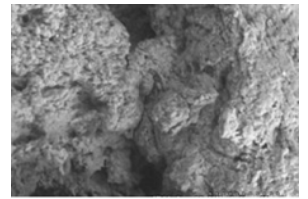
RS14D_h02.TIF



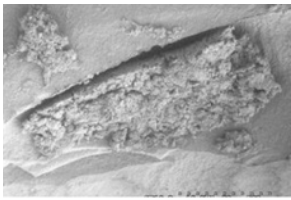
RS14D_i01.TIF



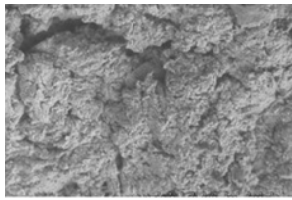
RS14D_i02.TIF



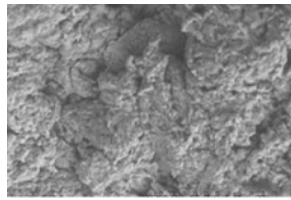
RS14D_i03.TIF



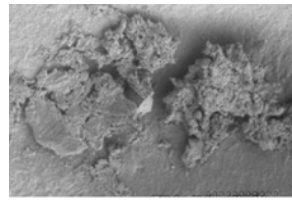
RS14D_j01.TIF



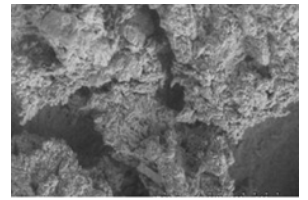
RS14D_j02.TIF



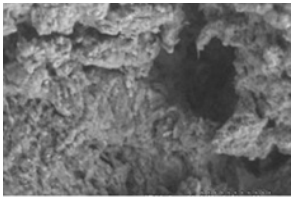
RS14D_j03.TIF



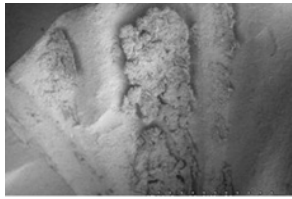
RS14D_k01.TIF



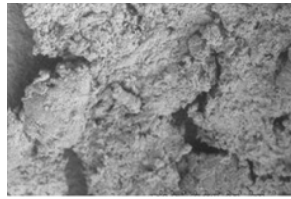
RS14D_k02.TIF



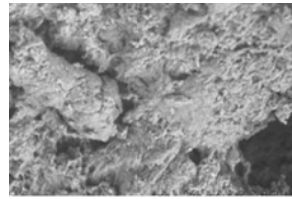
RS14D_k03.TIF



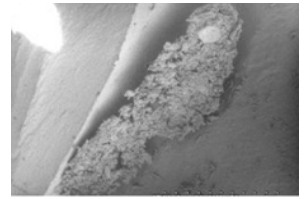
RS14D_l01.TIF



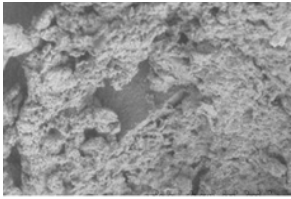
RS14D_l02.TIF



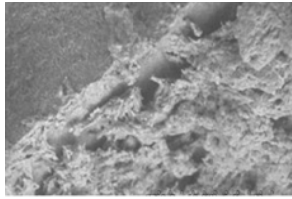
RS14D_l03.TIF



RS14D_m01.TIF



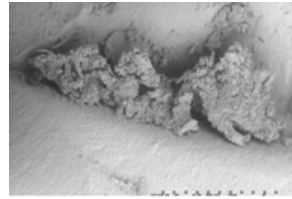
RS14D_m02.TIF



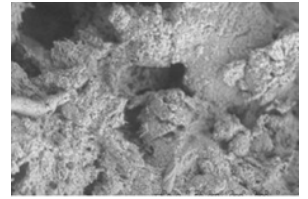
RS14D_m03.TIF



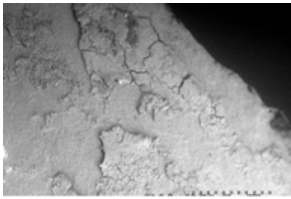
RS14D_n01.TIF



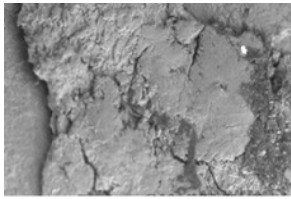
RS14V_a01.TIF



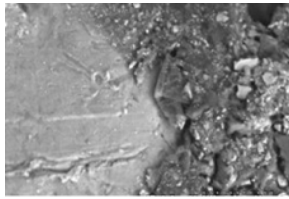
RS14V_a02.TIF



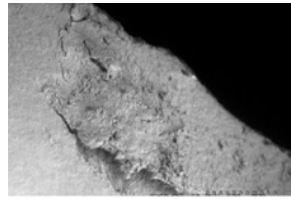
RS14V_b01.TIF



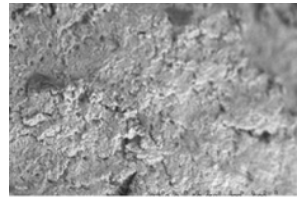
RS14V_b02.TIF



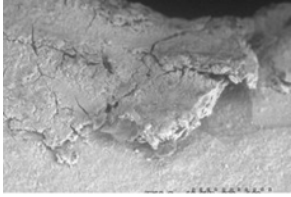
RS14V_b03.TIF



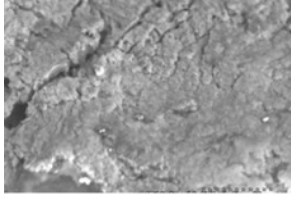
RS14V_c01.TIF



RS14V_c02.TIF



RS14V_d01.TIF



RS14V_d02.TIF

